



MINES RESCUE SERVICES (PTY) LTD

SOUTH AFRICA

AN OVERVIEW

Christo de Klerk | Chief Executive Officer, Mines Rescue Services | Johannesburg Country Club | 27 September 2016



WHAT IS MINES RESCUE SERVICES (MRS)



- Private sector organisation
- Trains volunteers for mine rescue work
- Administers rescue service scheme
- Provides rescue and recovery services, resources and expertise for an effective emergency service, primarily for the South African mining industry



HISTORY OF COMPANY



1924

Rand Mines Group established Central Rescue Training Station in Johannesburg

1961

Station opened in Welkom

1980

Relocation of Johannesburg station to Carletonville

1983

Relocation of Witbank station to Evander

1946

Taken over by Transvaal and OFS Chamber of Mines

1963

Station opened in Witbank (Emalahleni)

2012

Station opened in Steelpoort



SERVICES PROVIDED



- Train Rescue Team Members (Brigadesmen) to required skills competency
- Provide expert advice, consultancy service to all member mines
- Remain proactive to changes in technology in the mining industry, environment
- Provide, maintain specialised equipment for all member mines



INTERNATIONAL REACH



- Training provided in:
 - Zimbabwe
 - Zambia
 - Tanzania
 - Democratic Republic of Congo
 - Ghana
 - Swaziland
 - Botswana
 - Mali
- Training provided for China, Iran, Russia



MRS ORGANISATIONAL STRUCTURE



MRS BOARD OF DIRECTORS EIGHT LARGEST CONTRIBUTORS

1. ANGLOGOLD ASHANTI
2. ANGLO AMERICAN THERMAL COAL
3. ANGLO AMERICAN PLATINUM
4. SIBANYE GOLD
5. HARMONY GOLD
6. IMPALA PLATINUM
7. LONMIN
8. SASOL
9. Chamber of Mines of SA
10. Mines Rescue Services
11. Department of Mineral Resources (DMR)
12. Labour (October 2001)

MRS MANAGEMENT COMMITTEE

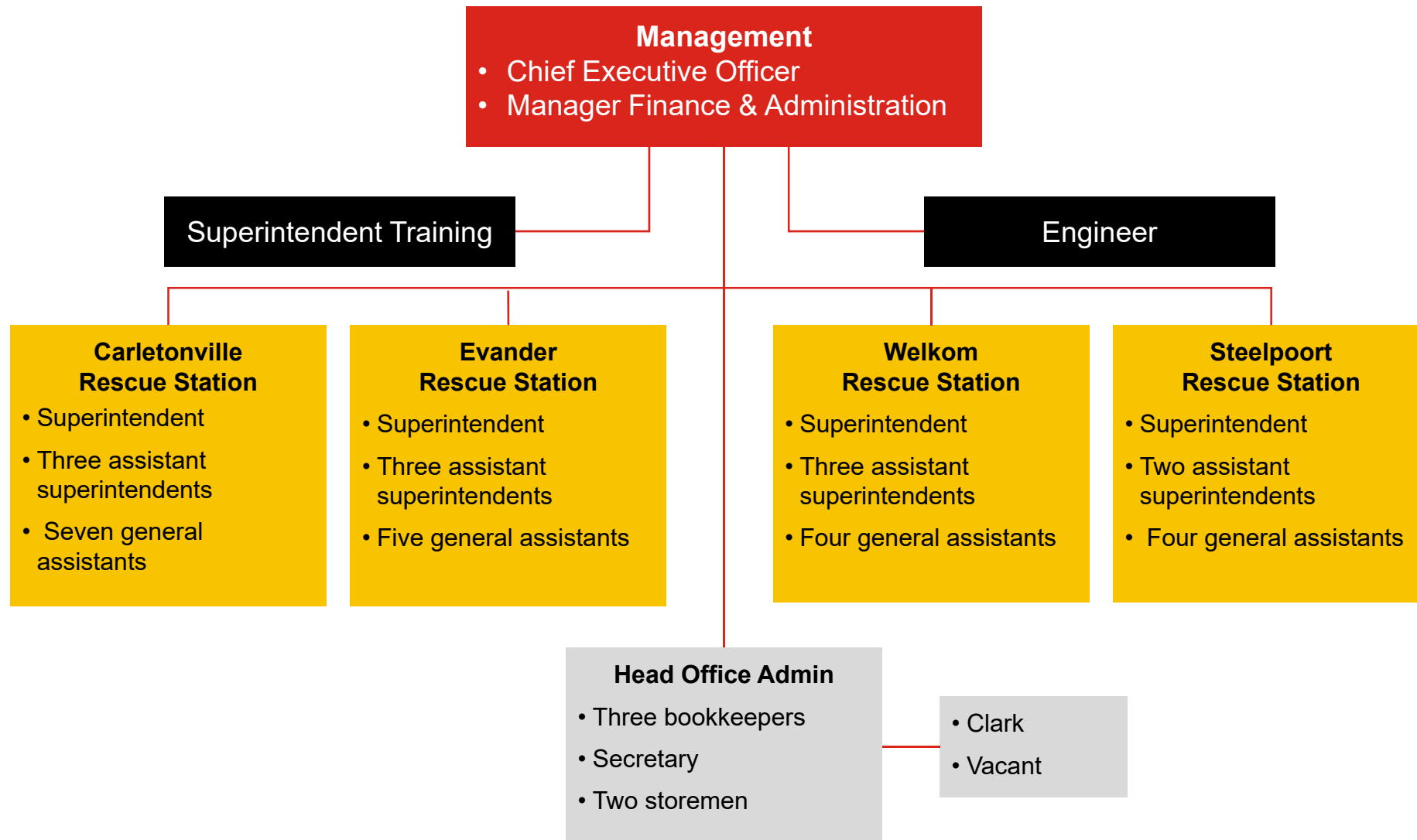
- General Manager MRS (Chairperson)
- South African Colliery Managers Association (SACMA)
 - two representatives
- Association of Mine Managers of South Africa (AMMSA)
 - two representatives
- South African Engineers Association (SACEA)
- Association of Mine Resident Engineers of South Africa (AMRE)

**MRS
operations**

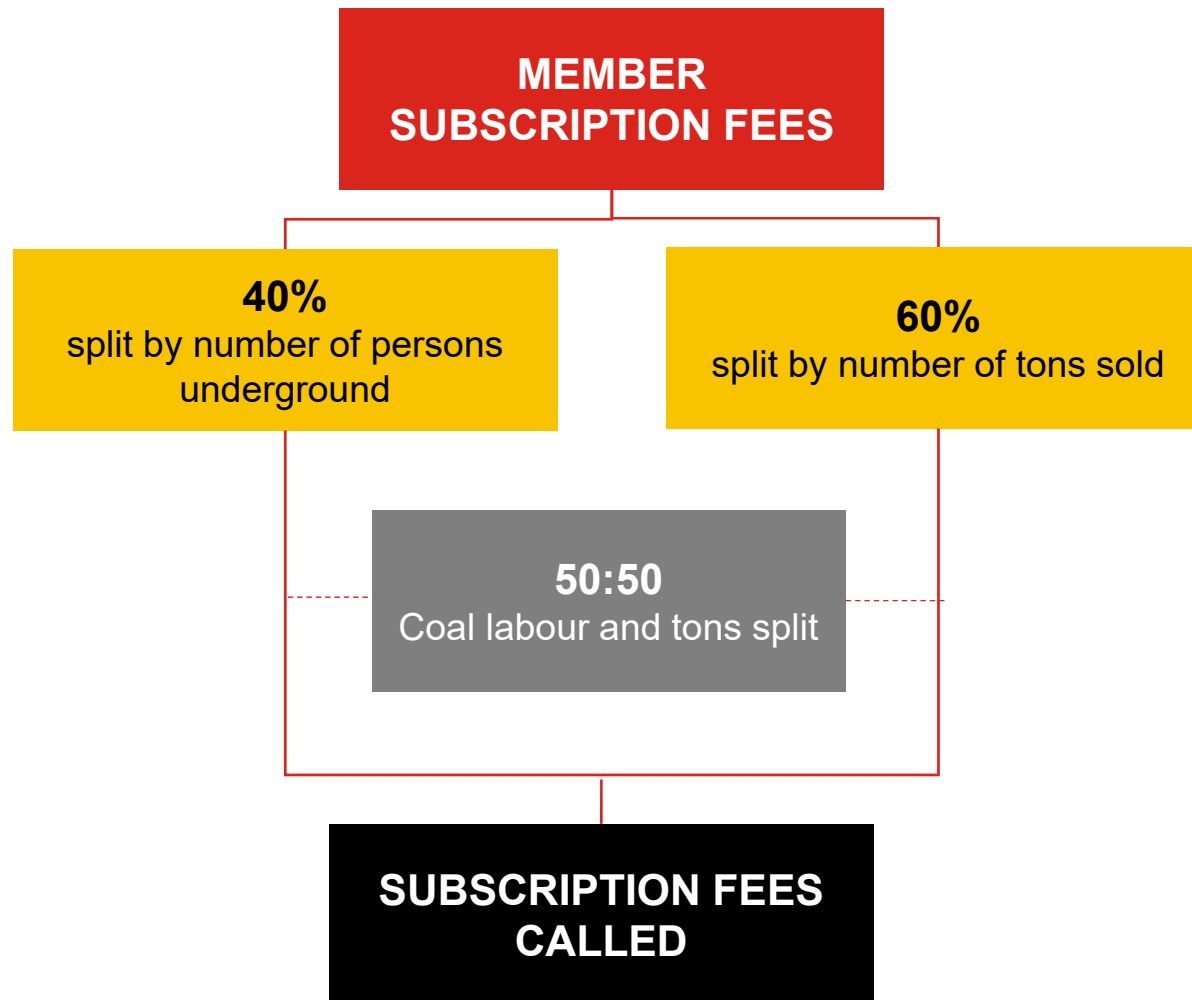
ORGANISATION STRUCTURE



45 employees in total



HOW MRS IS FUNDED



RESCUE TEAM REQUIREMENTS OF SOUTH AFRICAN MINES



- Mines Health and Safety Act, 1996, Chapter 16.5, Emergency Preparedness and Response:
 - every employer at every underground mine must maintain rescue teams in the following ratio:
 - 100 – 1 100 underground employees one team
 - 1 101 – 3 600 underground employees two teams
 - 3 601 – 8 100 underground employees three teams
 - more than 8 100 underground employees three teams
 - at least one additional team for every additional 6 300 employees

MEMBERSHIP SCHEME

- Two membership classes
 - A Class members
 - maintain own team/s
 - B Class members
 - do not maintain own team/s
 - can call for assistance from neighbouring mines through MRS



ADDITIONAL AGREEMENTS



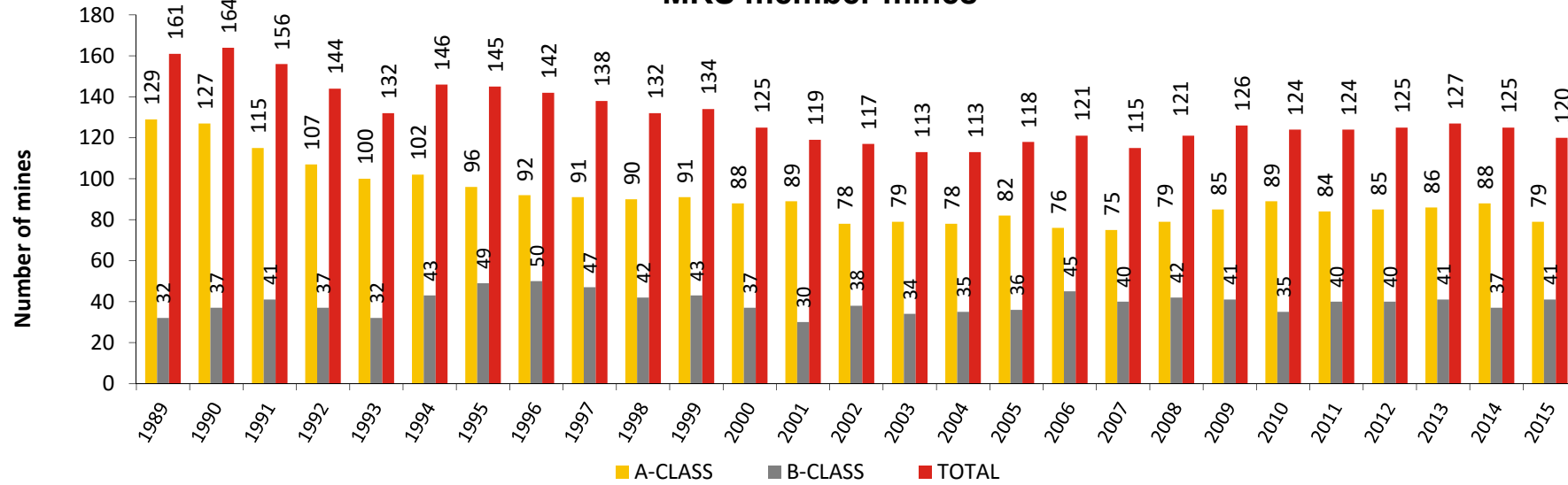
- Agreement with DMR to render assistance at abandoned and other mines approved by DMR
 - no assistance can be provided at such mines without DMR approval
- Agreements with non-member mines in the event of required assistance



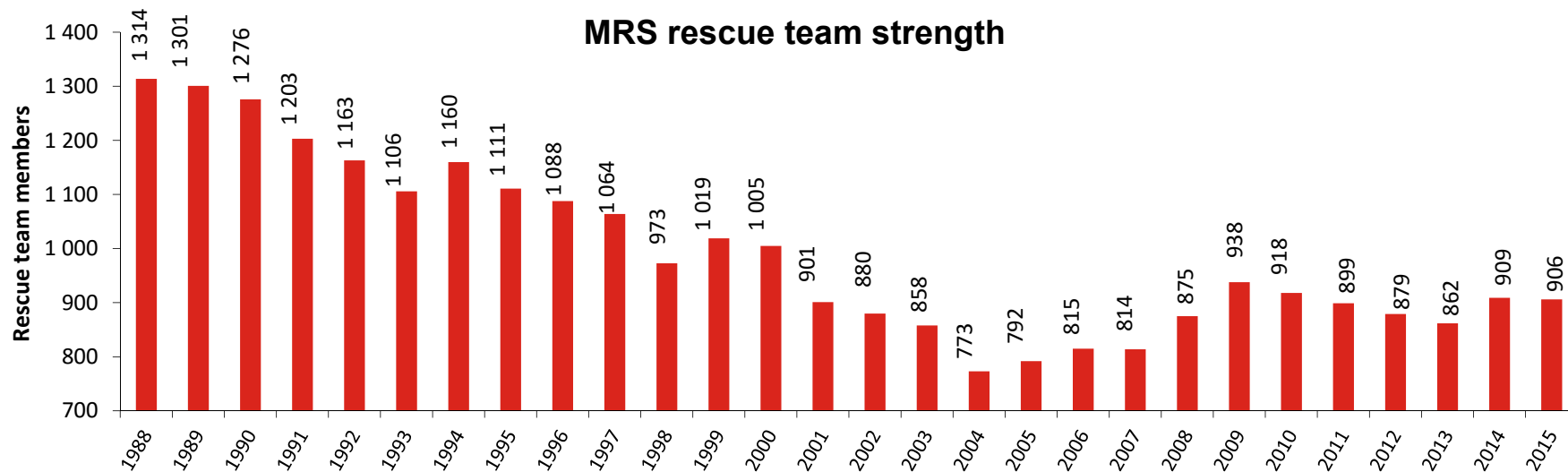
OUR MEMBERSHIP



MRS member mines



MRS rescue team strength



REQUIREMENTS FOR RESCUE TEAM MEMBERS



- All team members are volunteer mine employees
 - paid their normal shift rate for their rescue service by their employing mine
 - in addition, a fee for service by mines requiring the service during active duty
- Characteristics required of members:
 - stable temperament
 - responsible
 - used to discipline
 - experienced in underground work
 - aged between 21 and 46
- Volunteers must attend a five-day initial training course based on Quality Council for Trades and Occupations (QCTO) qualification



REQUIREMENTS FOR RESCUE TEAM MEMBERS, CONT'D



- All volunteers must undergo the following:
 - medical examinations
 - initial medical examination
 - periodical medical examination (six-monthly)
 - pre-operational medical examination/declaration
 - Heat Tolerance Test
 - Work Load Test
 - Mines Rope Rescue Training

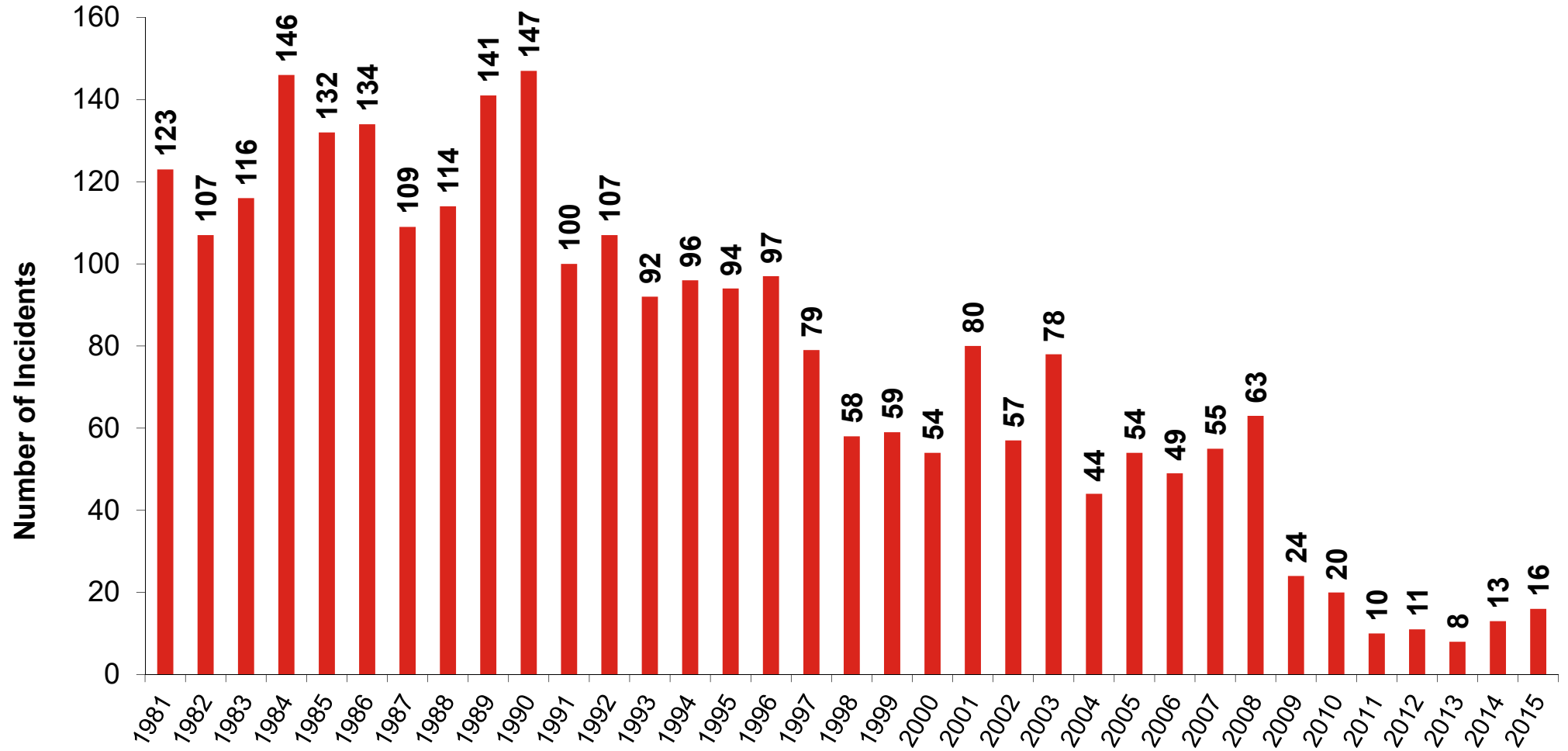


A TOTAL EMERGENCY SERVICE

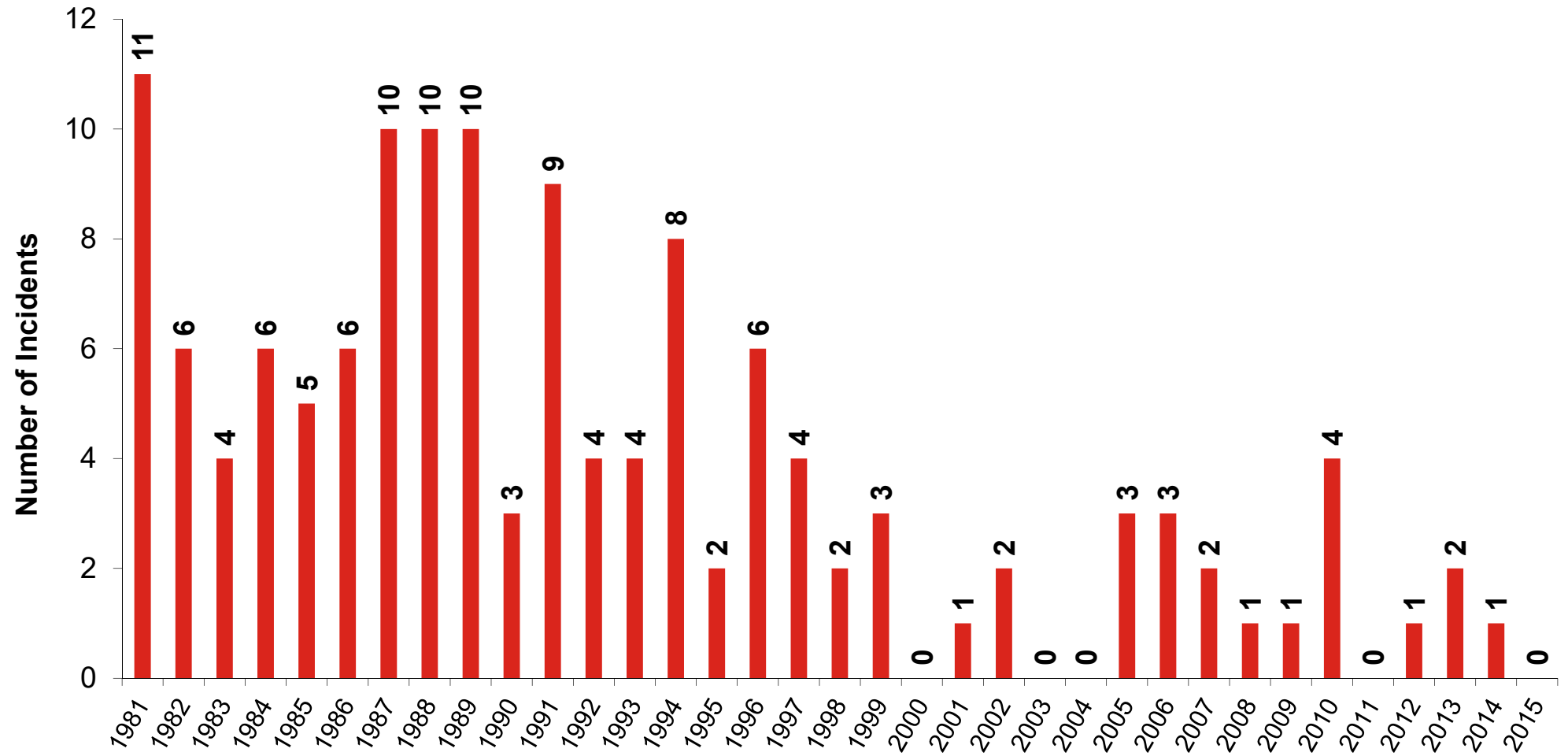
- MRS is called on in, but not limited to, the following mining emergency situations:
 - fires
 - explosions
 - fall-of-ground incidents
 - missing persons
 - body recovery



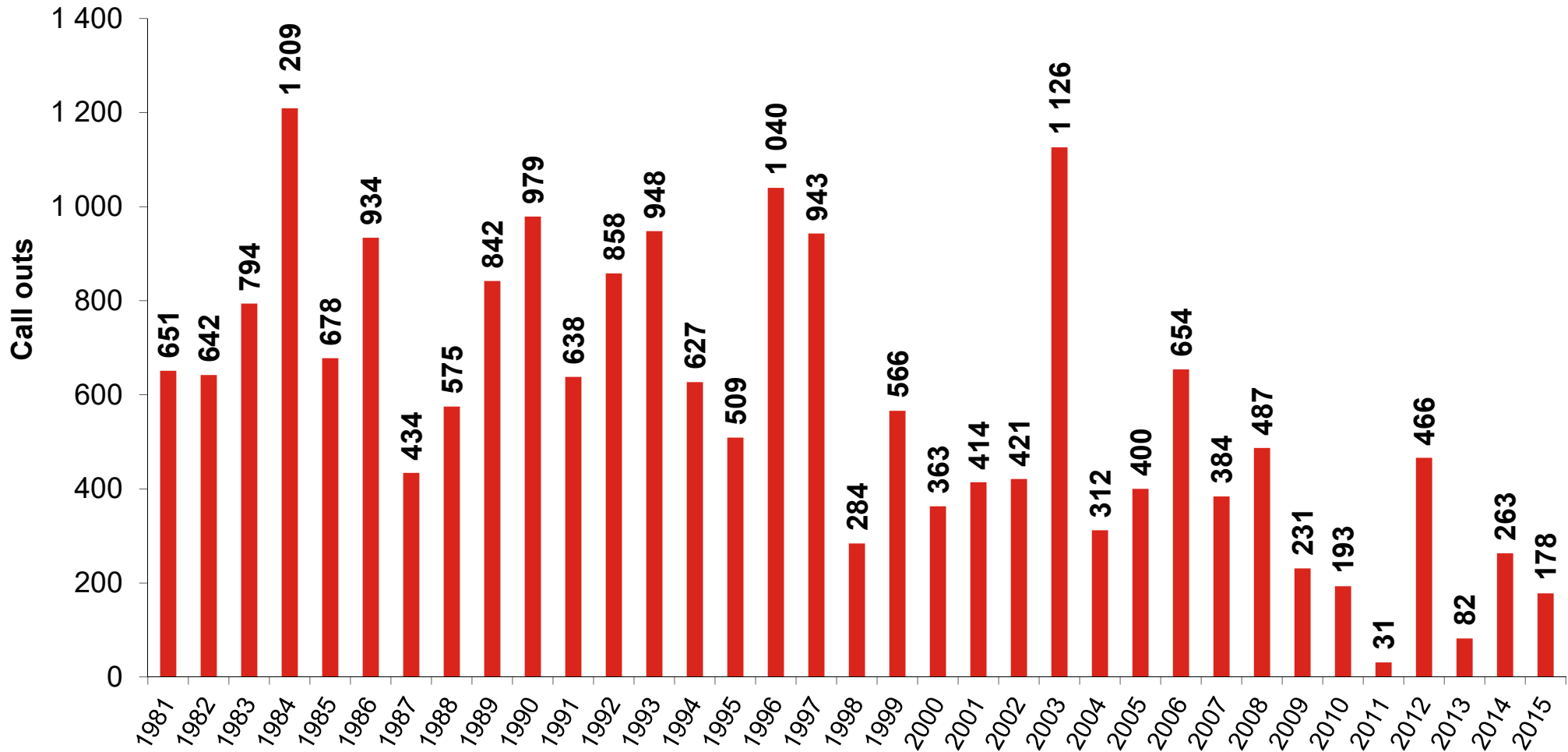
METALLIFEROUS FIRES 1981-2015



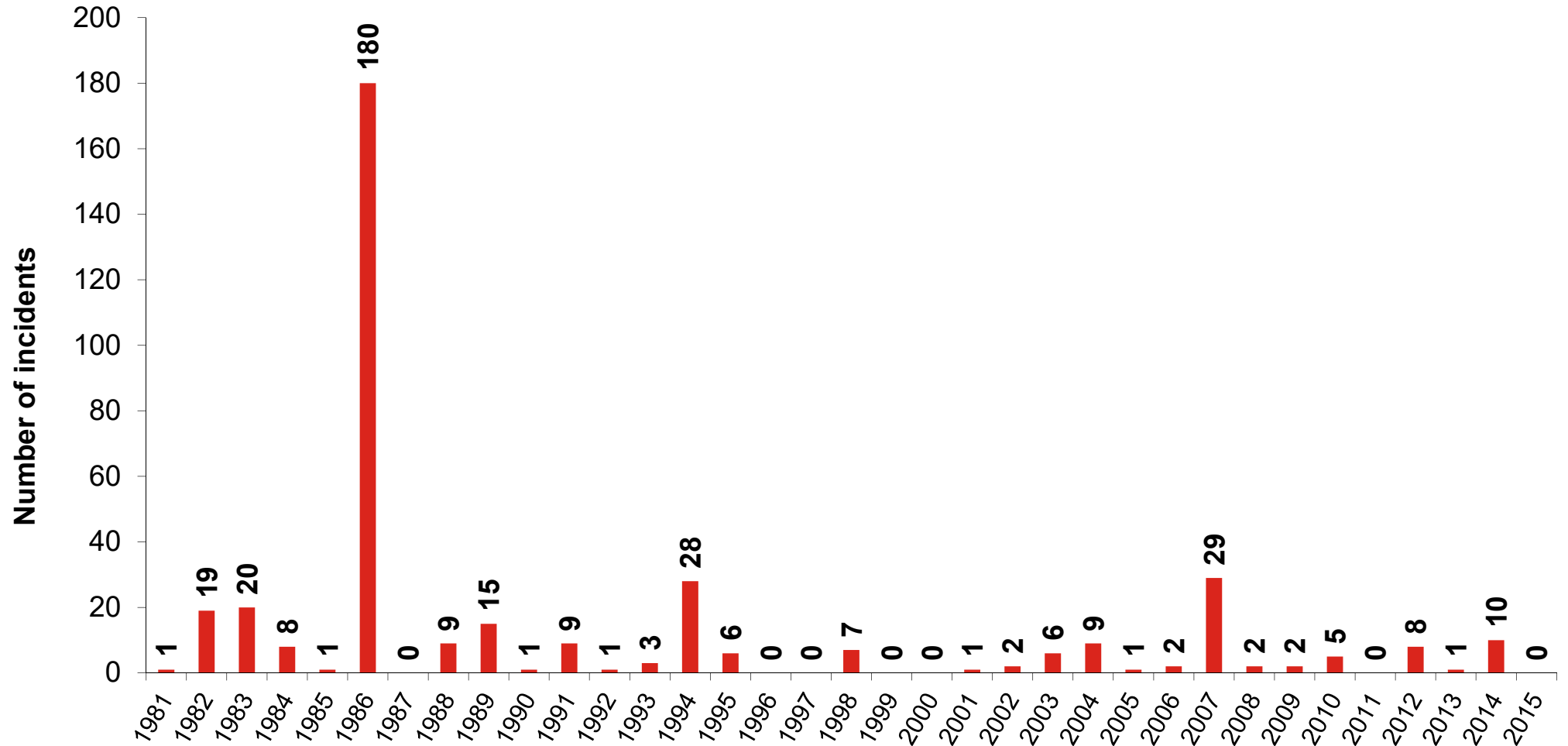
COLLIERY FIRES 1981-2015



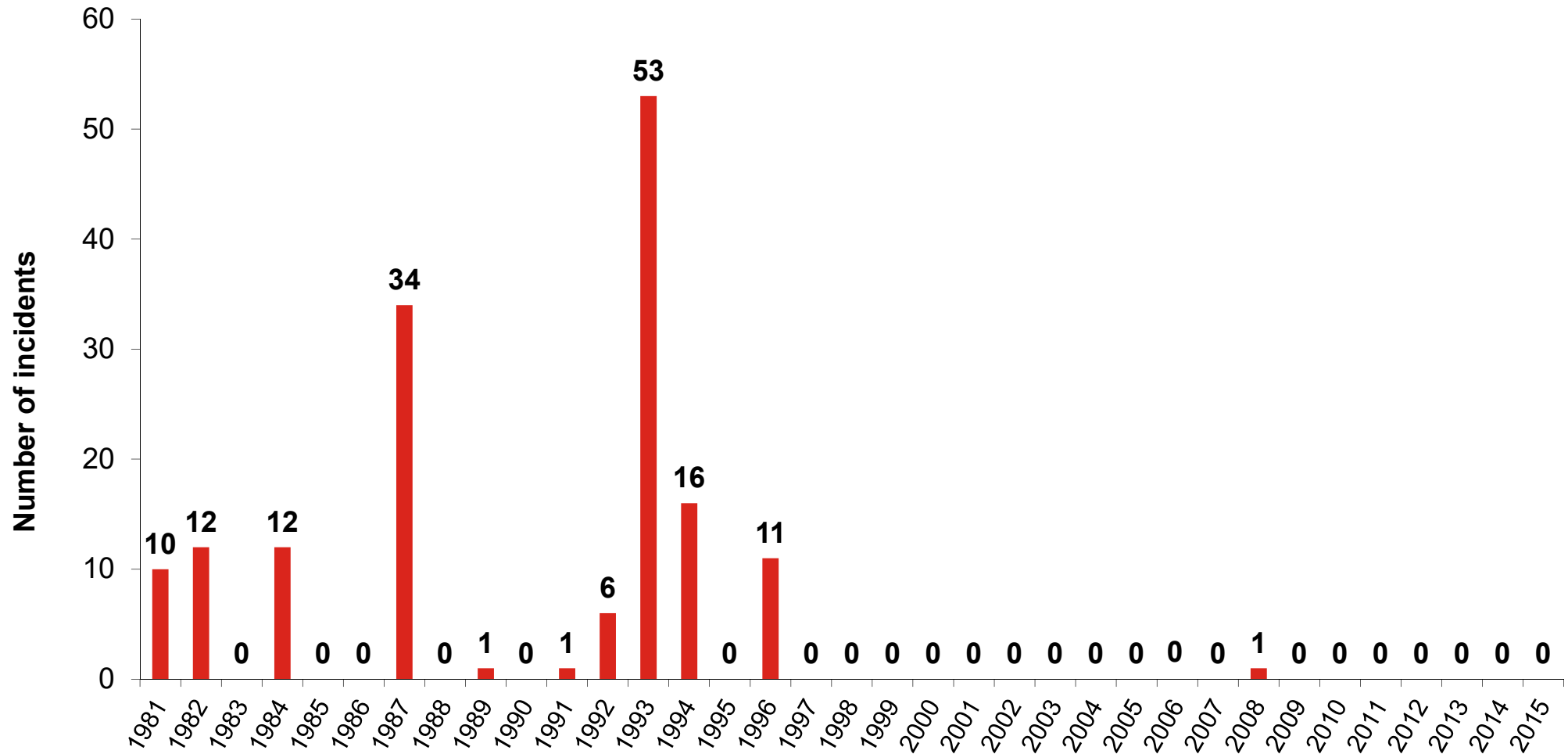
RESCUE TEAM USAGE (ALL FIRES) 1981-2015



METALLIFEROUS FATALITIES DUE TO FIRES, EXPLOSIONS 1981-2015



COLLIERY FATALITIES DUE TO FIRES, EXPLOSIONS 1981-2015



FIRES AND INCIDENTS



A few of the biggest incidents from the past 92 years are:

- 16 September 1986 – 177 workers' lives were claimed by the Kinross disaster
- 31 August 1987 – 63 workers died at St Helena Gold Mine as a result of an underground fire
- 13 May 1993 – 53 workers died due to methane explosion at Middelbult Colliery
- 10 May 1995 – 104 people died in the Vaal Reefs shaft accident



PEOPLE RESCUED

- Following a shaft accident at Kloof Gold Mine on 13 October 1993, 152 people were rescued over seven-day period
- 2011 – 162 people rescued
- 2012 – 219 people rescued
- 2013 – 36 people rescued
- 2014 – 100 people rescued
- 22 February 2015 – 486 at Kusasalethu
- 2 July 2015 – 18 at Nchwaneng
- 10 July 2015 – 51 at Marula
- 23 September 2015 – 65 at Kloof Gold Mine
- 2015 – 16 people rescued during other incidents





CONTACT DETAILS

Contact person

Christo de Klerk
Chief Executive Officer

Tel

+27 (18) 781 1141/2

Fax

+27 (18) 781 1085

Mobile

+27 (82) 550 6111

Email

christo@minesrescue.co.za