



Sibanye-Stillwater

OCCUPATIONAL HEALTH PERFORMANCE

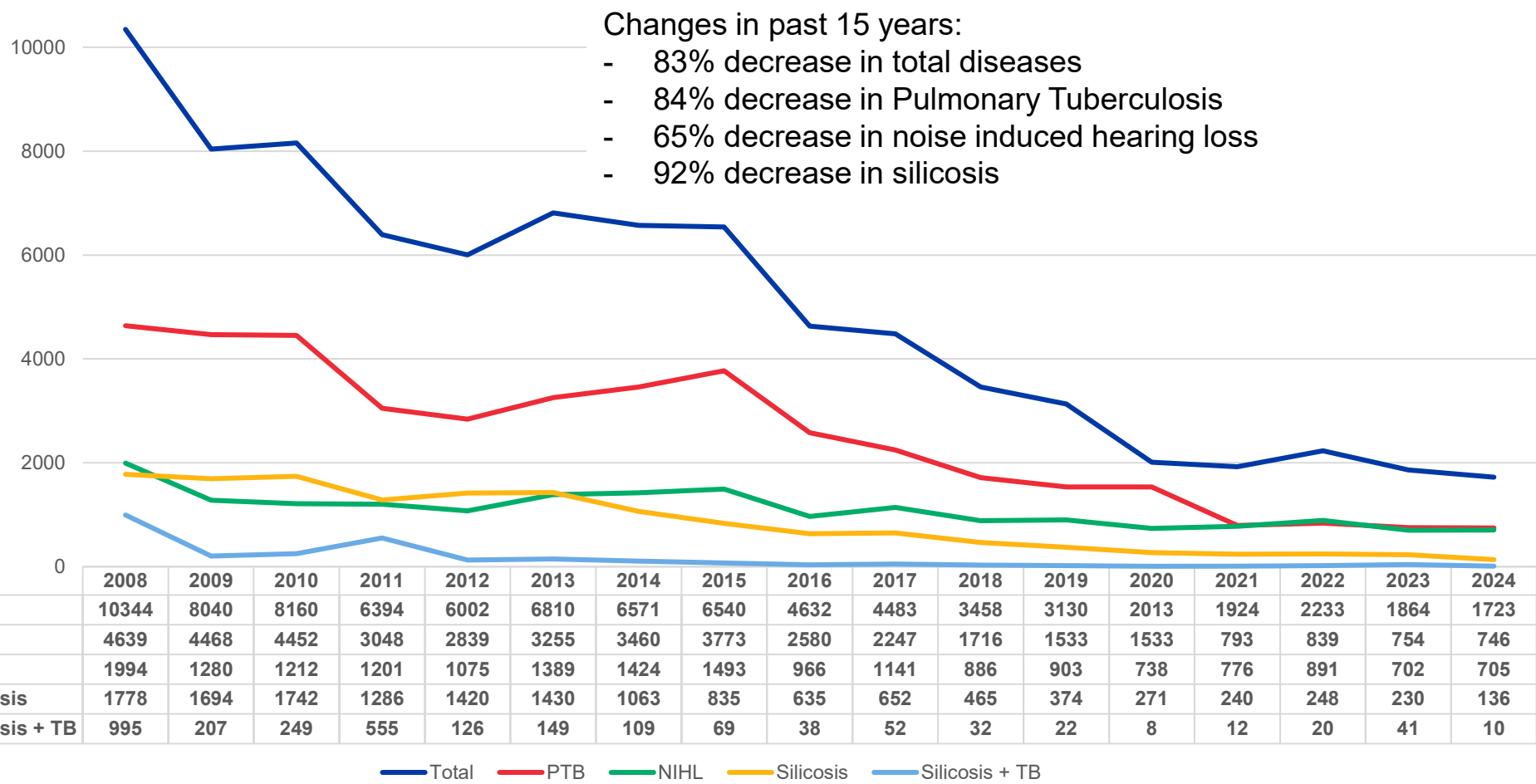
10 FEBRUARY 2026
MINING INDABA MEDIA BRIEFING



MINERALS COUNCIL
SOUTH AFRICA

OCCUPATIONAL DISEASES IN MINING SECTOR

OCCUPATIONAL DISEASES IN SOUTH AFRICAN MINING SECTOR: 2008 - 2024



Source: Department of Mineral and Petroleum Resources

OCCUPATIONAL DISEASES IN SOUTH AFRICAN MINING SECTOR: 2024 VS 2023

Disease	Gold		Platinum		Coal		Diamond		Chrome		Other		Total		%Change
	2023	2024	2023	2024	2023	2024	2023	2024	2023	2024	2023	2024	2023	2024	
PTB	406	334	197	211	79	109	26	14	21	27	25	51	754	746	1.1% decrease
Sil + TB	24	13	17	0	0	0	0	0	0	0	0	0	41	13	68.3% decrease
Silicosis	218	120	11	10	1	2	0	0	0	0	0	4	230	136	40.9% decrease
CWP	0	1	0	2	12	7	0	0	0	0	0	0	12	10	16.7% decrease
COAD	35	15	14	0	18	23	0	0	0	1	1	1	68	40	41.2% decrease
NIHL	291	251	313	306	43	83	3	7	21	28	31	30	702	705	0.43% increase
MSDs	0	0	10	14	14	23	1	0	0	1	1	2	26	40	53.9% increase
Asbestosis	1	0	1	1	0	1	0	0	0	0	0	0	2	2	No change
Other Occ. diseases	16	15	5	4	5	6	1	0	0	1	2	5	29	31	6.9% increase
Total Diseases	991	749	568	548	172	254	31	21	42	58	60	93	1,864	1,723	
% change	24.4% decrease		3.5% decrease		47.7% increase		32.3% decrease		38.1% increase		55% increase		7.6% decrease		7.6% decrease



Source: Department of Mineral and Petroleum Resources

OCCUPATIONAL DISEASES IN SOUTH AFRICAN MINING SECTOR: 2024 VS 2023

- The 2024 Mine Health and Safety Inspectorate Annual Report indicates that the total number of occupational diseases reported by the mines decreased by 7.6% from 1,864 in 2023 to 1,723 in 2024.
- Increases recorded for noise induced hearing loss (NIHL), musculoskeletal disorders and other occupational diseases. The incidence rate per 10,000 employees also decreased from 33.3 in 2023 to 31.3 in 2024.
- A decrease in occupational diseases reported was noted for gold, platinum and diamond mines while increases were noted for coal, chrome and other mines from 2023 to 2024.



OCCUPATIONAL MEDICINE MILESTONE PERFORMANCE



INDUSTRY OCCUPATIONAL MEDICAL MILESTONE PERFORMANCE SUMMARY: 2015 - 2024

Topic	Milestone	Progress
Elimination of pneumoconiosis	No new cases of silicosis will occur amongst previously unexposed individuals (new people entering mining industry in 2009)	Milestone not met. Cases of silicosis in novices reported
Reduction of noise induced hearing loss (NIHL)	By December 2016, no employee's Standard Threshold Shift (STS) will exceed 25dB from the baseline when averaged at 2000, 3000 and 4000HZ in one or both ears	Milestone not met
Reduction of Tuberculosis (TB)	By December 2024, TB incidence rate should be at or below the national TB incidence rate.	Milestone met
Reduction of Human Immunodeficiency Virus (HIV)	100% of employees should be offered HIV counselling and testing annually and eligible employees linked to ART programme	Target not met



The SAMI did not achieve all the Milestones for Occupational Medicine

INDUSTRY OCCUPATIONAL MEDICAL MILESTONE PERFORMANCE SUMMARY: 2025

Topic	Milestone	Progress
Elimination of pneumoconiosis	No new cases of silicosis will occur amongst previously unexposed individuals (new people entering mining industry in 2025)	Milestone met. No cases of silicosis in novices reported
Reduction of noise induced hearing loss (NIHL)	Using current Diagnostic Methods, By December 2034 , there should be no Novice cases of Noise Induced Hearing Loss amongst previously unexposed individuals. (“previously unexposed individual” are those unexposed to occupational noise prior to December 2024 i.e. equivalent to a new person who entered the industry in January 2025”)	Milestone met No cases of NIHL in novices
Reduction of Tuberculosis (TB)	By December 2034, TB incidence rate should be at or below the national TB incidence rate.	Milestone met. SAMI TB Incidence below SA national rate
Reduction of Human Immunodeficiency Virus (HIV)	95% of employees should be offered HIV Counselling and Testing (HCT) annually with all eligible employees linked and retained to an Antiretroviral Therapy Treatment (ART) Programme as per the National Strategic Plan (NSP). (This covers both in house and outsourced testing).	By Q4 2025 : 60% offered HCT 76% tested for HIV 42% linked to ART
Mental Health awareness In the SAMI	a) 95% of employees should be screened annually for mental health. b) 100% of screened employees with mental health challenges to be linked to care (This includes in-house or referral) annually).	By Q4 2025: 60% screened for mental health 71% linked to care

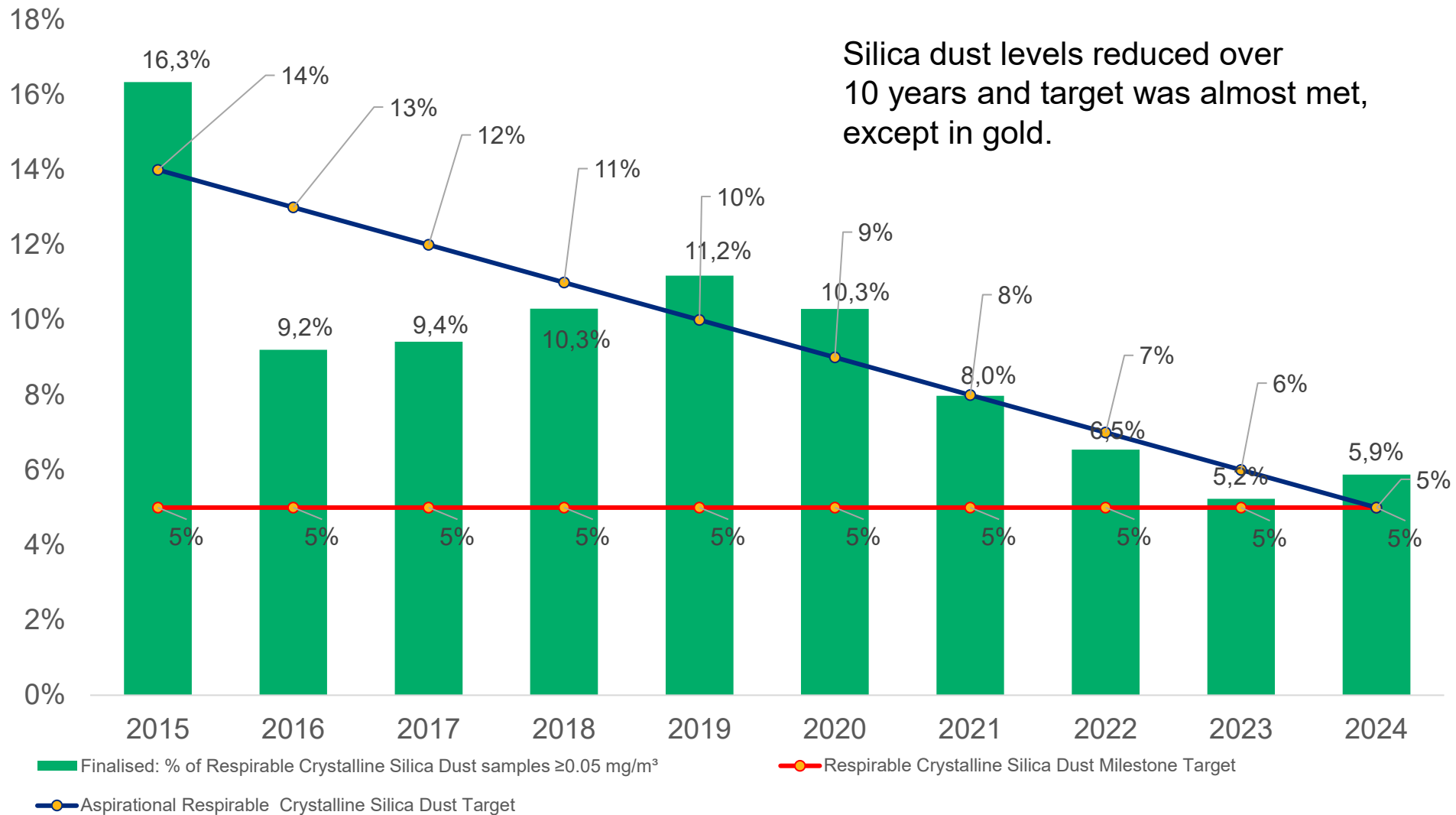


The SAMI did not achieve all the Milestones for Occupational Medicine

OCCUPATIONAL HYGIENE MILESTONE PERFORMANCE

INDUSTRY RESPIRATORY CRYSTALLINE SILICA QUARTZ TREND AGAINST TARGETS: 2015 - 2024

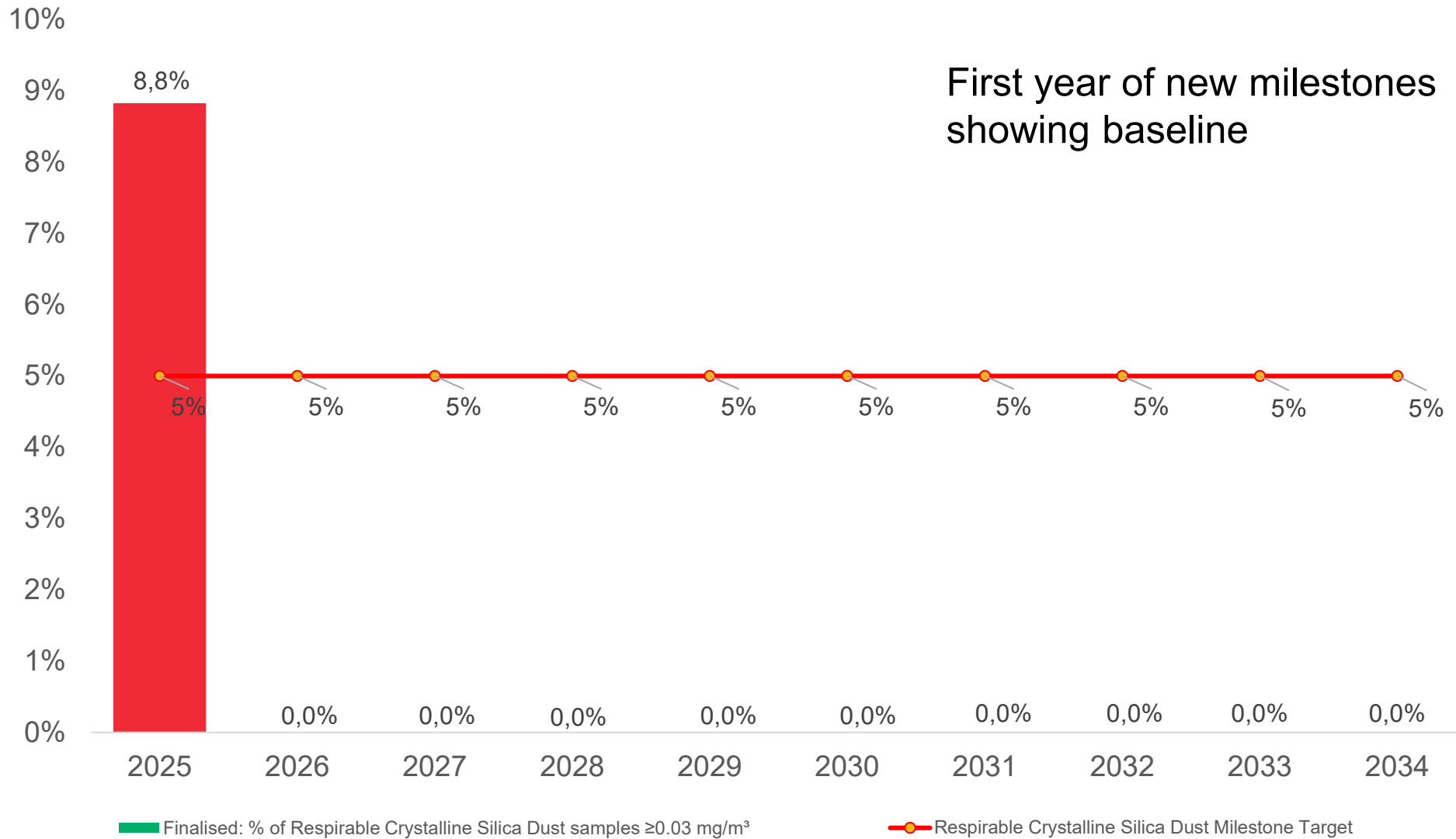
% of Respirable Crystalline Silica Dust samples ≥ 0.05 mg/m³



The SAMI did not achieve the Milestone for Respirable Crystalline Silica

INDUSTRY RESPIRABLE CRYSTALLINE SILICA QUARTZ TREND AGAINST TARGETS: 2025

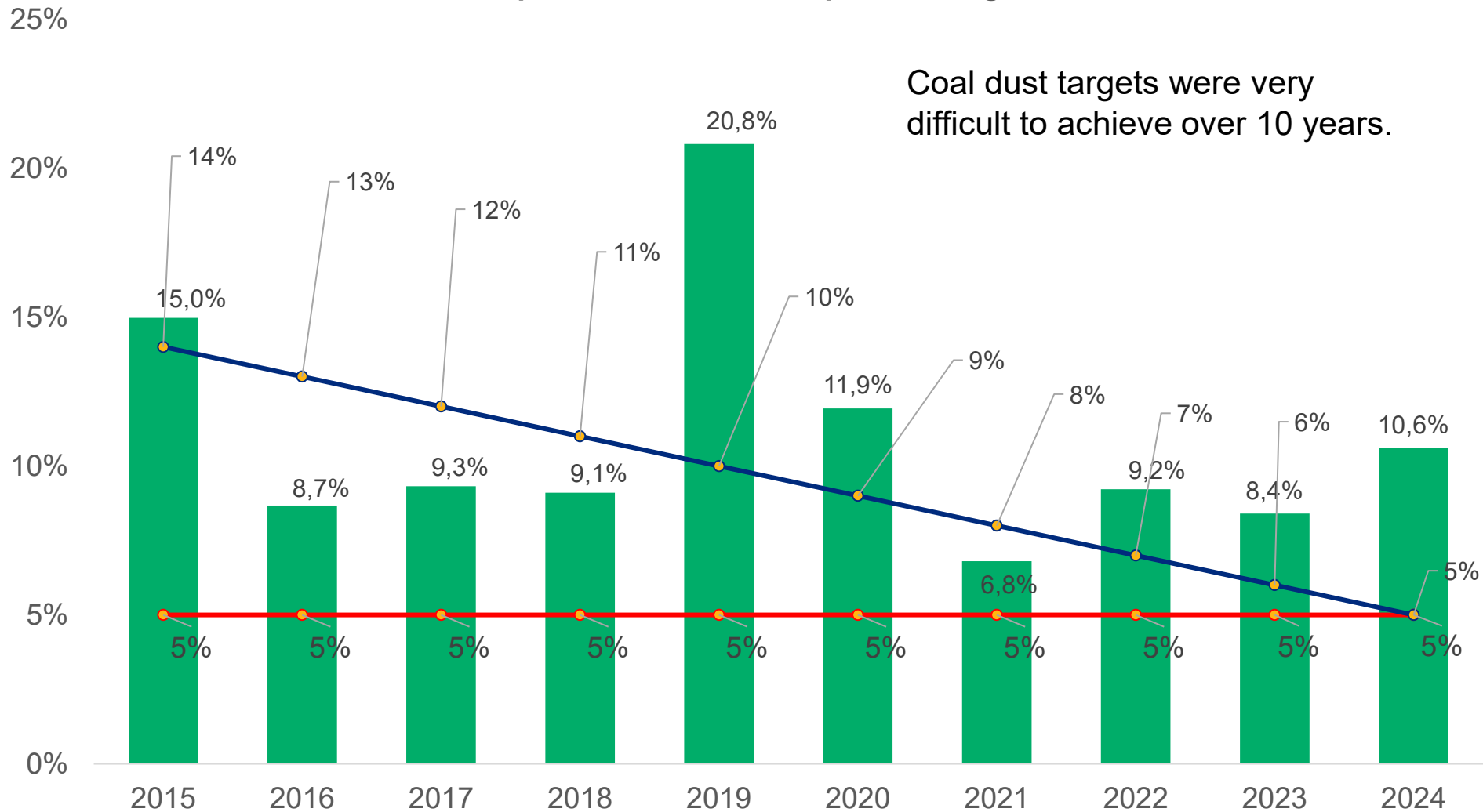
Industry % of Respirable Crystalline Silica Dust samples $\geq 0.03 \text{ mg/m}^3$



The industry did not achieve the targets for Respirable Crystalline Silica

INDUSTRY RESPIRATORY COAL DUST TREND AGAINST TARGETS

% of Respirable Coal Dust samples $\geq 1.5 \text{ mg/m}^3$

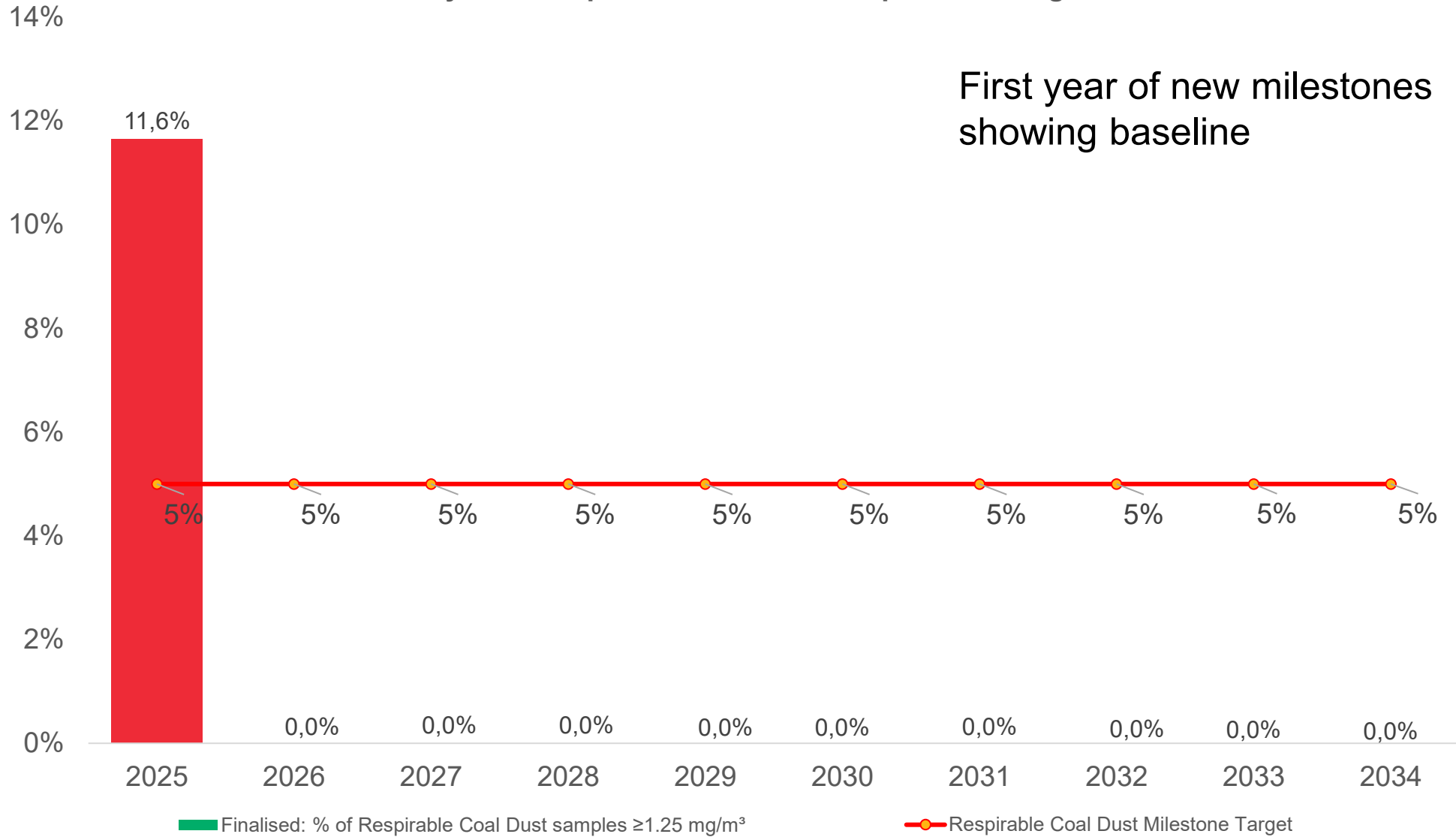


■ Finalised: % of Respirable Coal Dust samples $\geq 1.5 \text{ mg/m}^3$
● Respirable Coal Dust Milestone Target
 ● Aspirational Respirable Coal Dust Target

The industry did not achieve the Milestone for Respirable Coal Dust

INDUSTRY RESPIRABLE COAL DUST TREND AGAINST TARGETS

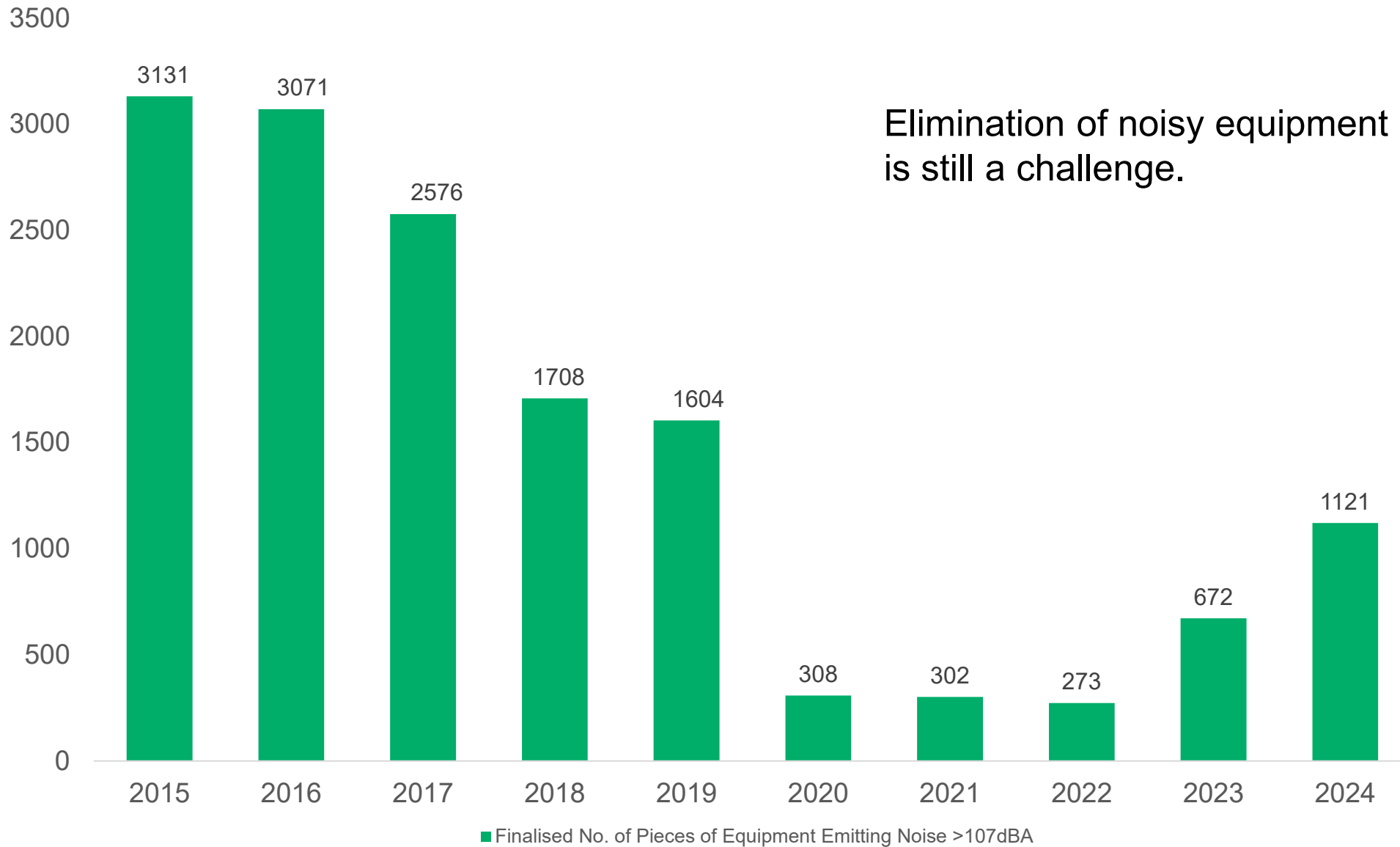
Industry % of Respirable Coal Dust samples $\geq 1.25 \text{ mg/m}^3$



The industry did not achieve the targets for the Respirable Coal Dust

INDUSTRY TREND AGAINST THE ELIMINATION OF NIHL MILESTONE

Total number of individual pieces of equipment ≥ 107 dB (A)



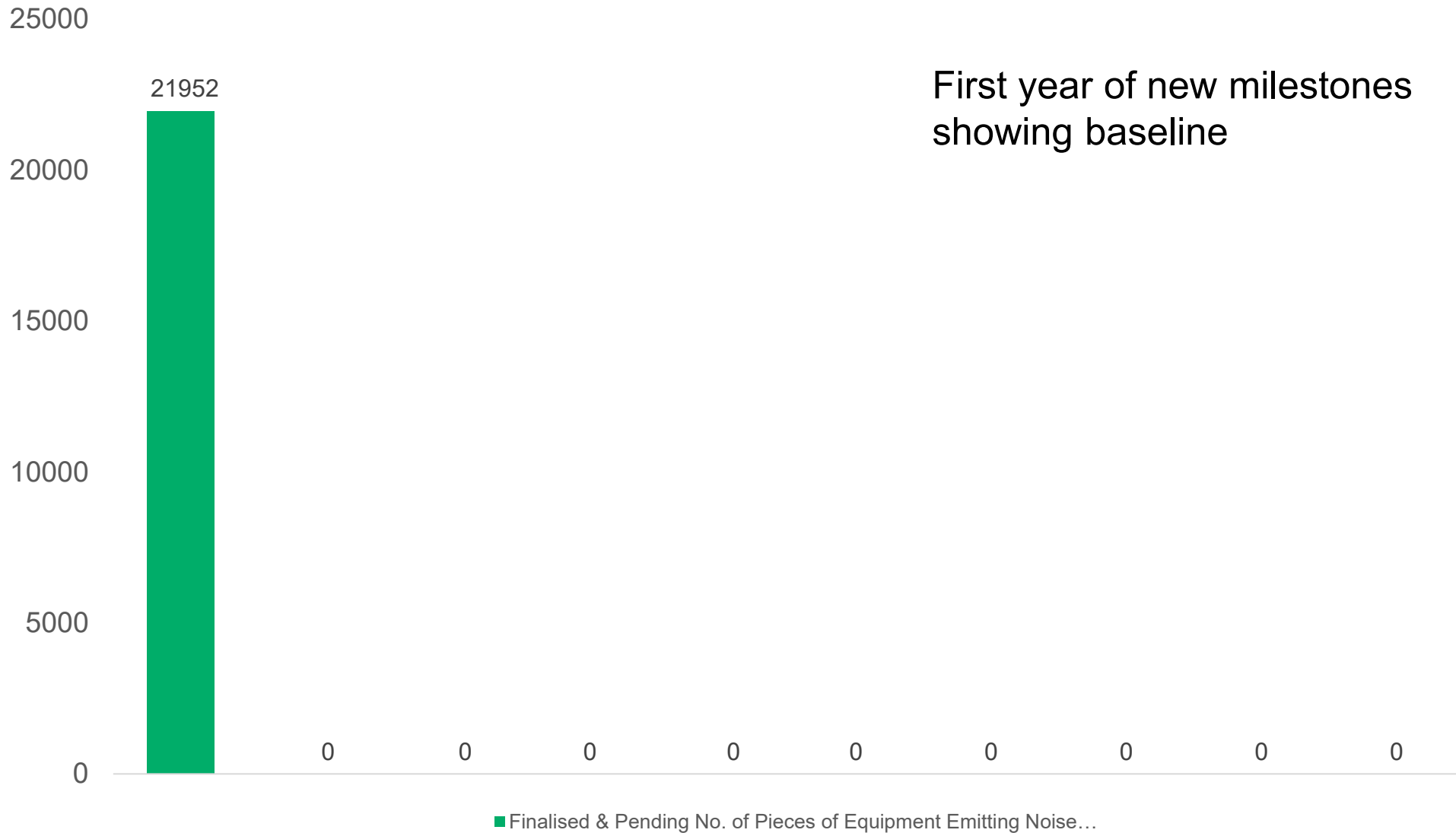
Elimination of noisy equipment is still a challenge.



The industry did not eliminate individual pieces of machines ≥ 107 dB (A)

INDUSTRY TREND AGAINST THE ELIMINATION OF NIHL MILESTONE

Total number of individual pieces of equipment ≥ 104 dB (A)



The industry is not on-track to eliminate individual pieces of machines ≥ 104 dB (A)

WITHDRAWAL OF UNITED STATES FUNDING

IMPACT OF WITHDRAWAL OF US FUNDING

- US funds accounted for 17% of funding for HIV services.
- Services impacted were:
 - HIV prevention services
 - Data capturing and reporting
 - Community services to key populations
 - Targeted universal test for TB
- Biggest impact for mining is community services and some companies have increased collaboration with department on health on community services. Participate in screening campaigns in communities.
- Companies continue to monitor any impact on TB and HIV rates in the workplace and in communities.



THANK YOU

T +27 11 498 7100

E info@mineralscouncil.org.za

W www.mineralscouncil.org.za

7th Floor, Rosebank Towers, 19 Biermann Avenue, Rosebank, 2196, PO Box 61809, Marshalltown 2107



MINERALS COUNCIL
SOUTH AFRICA